



LADDERS & MARKERS

ACCURATE and CLEAR BAND Identification

Clear band resolution

Accurate, easy-to-read results

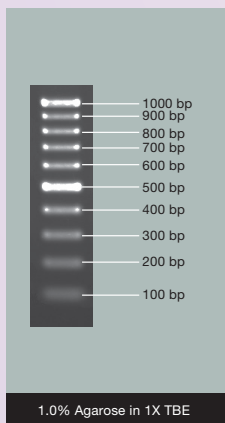
Ready-to-use & load-and-go

VC DNA Ladders

Serves as molecular weight standards for electrophoresis for both agarose and polyacrylamide gels. Suitable for sizing of PCR products or other double-stranded DNA fragments.



VC 100bp DNA Ladder

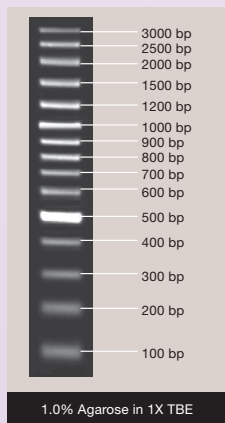


1.0% Agarose in 1X TBE

Packaging size:

- NL1401 : 50 µg
 - NL1402 : 5 x 50 µg
 - NL1403 : 50 µg (ready-to-use)
 - NL1404 : 5 x 50 µg (ready-to-use)
- Store at -20°C

VC 100bp Plus DNA Ladder

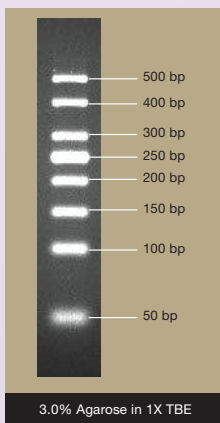


1.0% Agarose in 1X TBE

Packaging size:

- NL1405 : 50 µg
 - NL1406 : 5 x 50 µg
 - NL1407 : 50 µg (ready-to-use)
 - NL1408 : 5 x 50 µg (ready-to-use)
- Store at -20°C

VC 50bp DNA Ladder

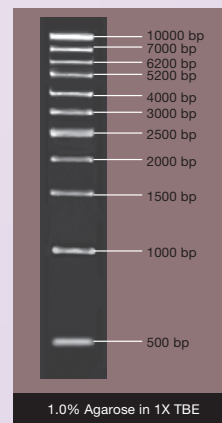


3.0% Agarose in 1X TBE

Packaging size:

- NL1421 : 50 µg
 - NL1422 : 5 x 50 µg
 - NL1423 : 50 µg (ready-to-use)
 - NL1424 : 5 x 50 µg (ready-to-use)
- Store at -20°C

VC 1kb DNA Ladder



1.0% Agarose in 1X TBE

Packaging size:

- NL1409 : 50 µg
 - NL1410 : 5 x 50 µg
 - NL1411 : 50 µg (ready-to-use)
 - NL1412 : 5 x 50 µg (ready-to-use)
- Store at -20°C

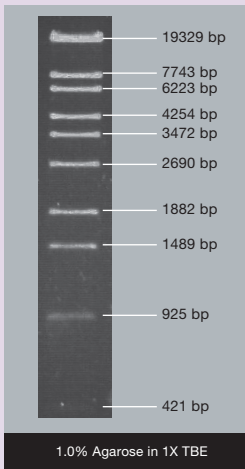
Also available:

- VC 1kb-Ex DNA Ladder - NL1413 : 50 µg, NL1414 : 5 x 50 µg, NL1415 : 50 µg (ready-to-use), NL1416 : 5 x 50 µg (ready-to-use)
 VC DNA Ladder Mix - NL1417 : 50 µg, NL1418 : 5 x 50 µg, NL1419 : 50 µg (ready-to-use), NL1420 : 5 x 50 µg (ready-to-use)



VC DNA Markers

**VC Lambda/
BssT I Marker**



1.0% Agarose in 1X TBE

Packaging size:

- NM2433 : 50 µg
 - NM2434 : 5 x 50 µg
 - NM2435 : 50 µg (ready-to-use)
 - NM2436 : 5 x 50 µg (ready-to-use)
- Store at -20°C

**VC Lambda/
EcoR I Marker**

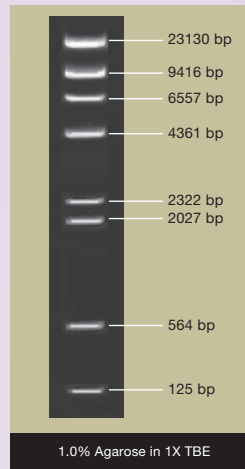


0.7% Agarose in 1X TBE

Packaging size:

- NM2401 : 50 µg
 - NM2402 : 5 x 50 µg
 - NM2403 : 50 µg (ready-to-use)
 - NM2404 : 5 x 50 µg (ready-to-use)
- Store at -20°C

**VC Lambda/
Hind III Marker**

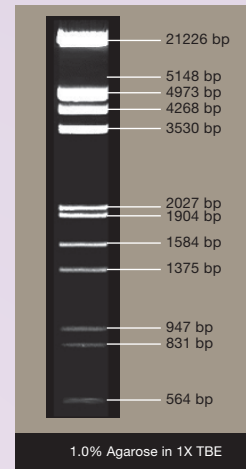


1.0% Agarose in 1X TBE

Packaging size:

- NM2405 : 50 µg
 - NM2406 : 5 x 50 µg
 - NM2407 : 50 µg (ready-to-use)
 - NM2408 : 5 x 50 µg (ready-to-use)
- Store at -20°C

**VC Lambda/
EcoR I+Hind III Marker**



1.0% Agarose in 1X TBE

Packaging size:

- NM2409 : 50 µg
 - NM2410 : 5 x 50 µg
 - NM2411 : 50 µg (ready-to-use)
 - NM2412 : 5 x 50 µg (ready-to-use)
- Store at -20°C

Also available:

CentiMark PCR Marker - NM2417 : 50 µg, NM2418 : 5 x 50 µg, NM2419 : 50 µg (ready-to-use), NM2420 : 5 x 50 µg (ready-to-use)

MilliMark PCR Marker - NM2421 : 50 µg, NM2422 : 5 x 50 µg, NM2423 : 50 µg (ready-to-use), NM2424 : 5 x 50 µg (ready-to-use)

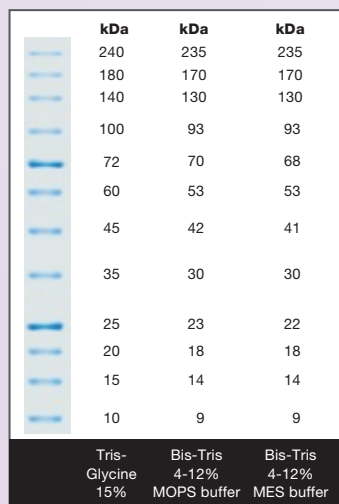
VC Lambda / Pst I Marker - NM2425 : 50 µg, NM2426 : 5 x 50 µg, NM2427 : 50 µg (ready-to-use), NM2428 : 5 x 50 µg (ready-to-use)

VC pUC19 / Msp I Marker - NM2413 : 50 µg, NM2414 : 5 x 50 µg, NM2415 : 50 µg (ready-to-use), NM2416 : 5 x 50 µg (ready-to-use)

VC pBR 322 / Hae III Marker - NM2429 : 50 µg, NM2430 : 5 x 50 µg, NM2431 : 50 µg (ready-to-use), NM2432 : 5 x 50 µg (ready-to-use)

Protein Ladder & Markers

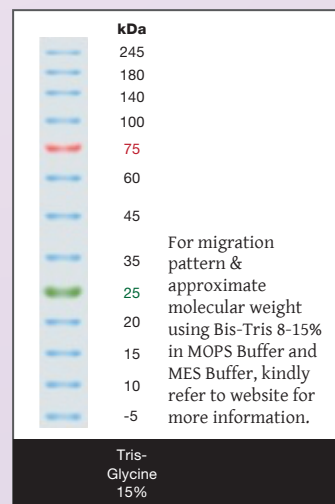
**Whole Blue Range
Prestained Protein Ladder**



Packaging size:

- PR0623: 2 x 250µl (ready-to-use)
- Store at -20°C

**Tricolor Broad Range
Prestained Protein Ladder**



Packaging size:

- PR0624: 2 x 250µl (ready-to-use)
- Store at -20°C

Features:

- **Broad Range**
- **Convenient:**
Supplied in loading buffer for direct loading, ready-to-use
- **Easy Identification:**
Reference bands coupled with coloured dyes
- **Applications:**
SDS-PAGE and Western Blot

